

1 - BEDROOM SUITE

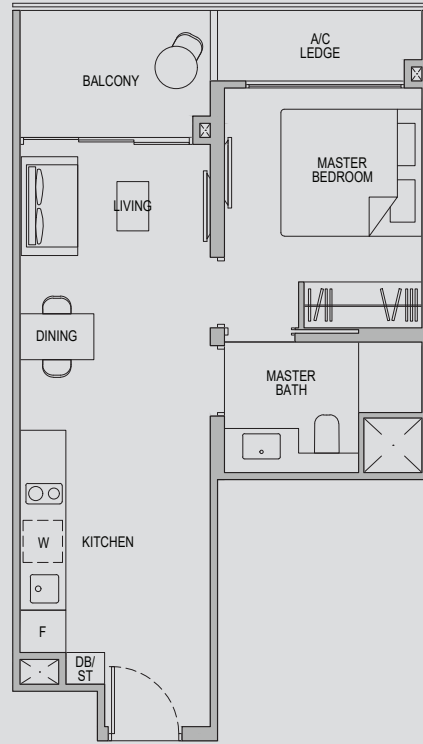
Type 1B1

Area: 48 sqm (include 3 sqm A/C Ledge, 5 sqm Balcony)

Unit(s): #02-04* to #22-04*

#02-05 to #22-05

#02-14 to #22-14



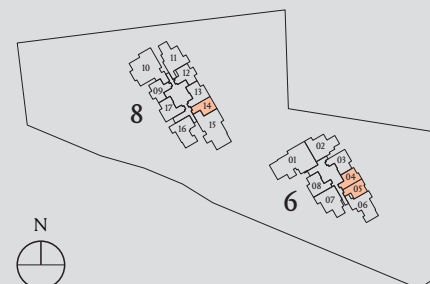
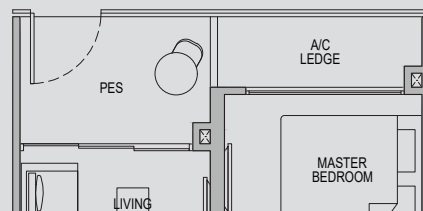
Type 1B1-G

Area: 48 sqm (include 3 sqm A/C Ledge, 5 sqm PES)

Unit(s): #01-04*

#01-05

#01-14



Note: *Mirror Image

Plans are subject to change/amendments as may be required and/or approved by the Developer and/or the relevant authorities and do not form part of any offer or contract. These are not drawn to scale and are for the purpose of visual presentation only. The balcony shall not be enclosed unless with the approved balcony screen. For an illustration of the approved balcony screen, please refer to APPROVED BALCONY SCREEN DESIGN page of this brochure.

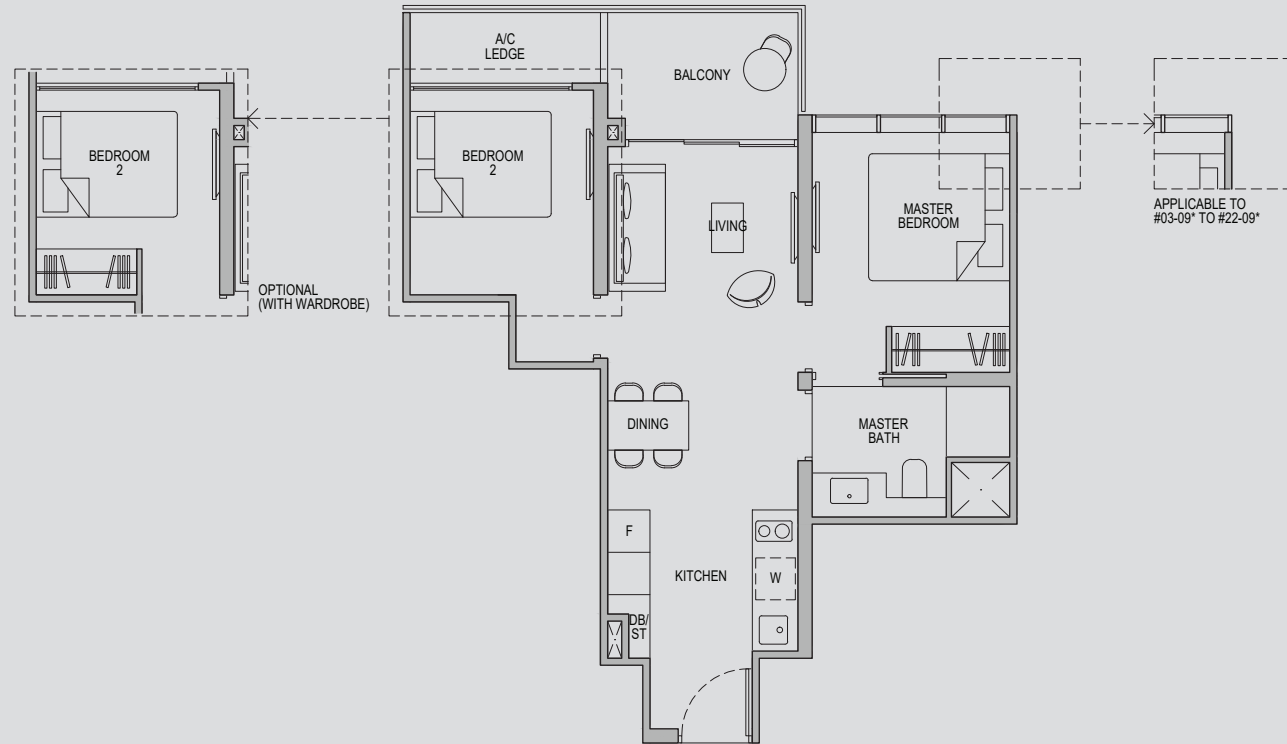


2 - BEDROOM CLASSIC

Type 2C1

Area: 57 sqm (include 3 sqm A/C Ledge, 5 sqm Balcony)

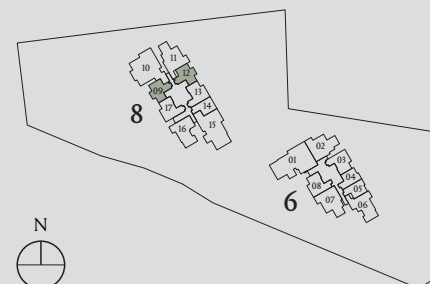
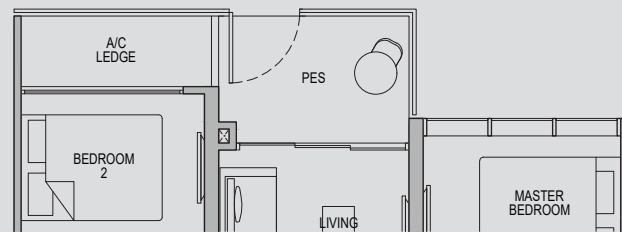
Unit(s): #03-09* to #22-09*
#02-12 to #22-12



Type 2C1-G

Area: 57 sqm (include 3 sqm A/C Ledge, 5 sqm PES)

Unit(s): #01-12



Note: *Mirror Image

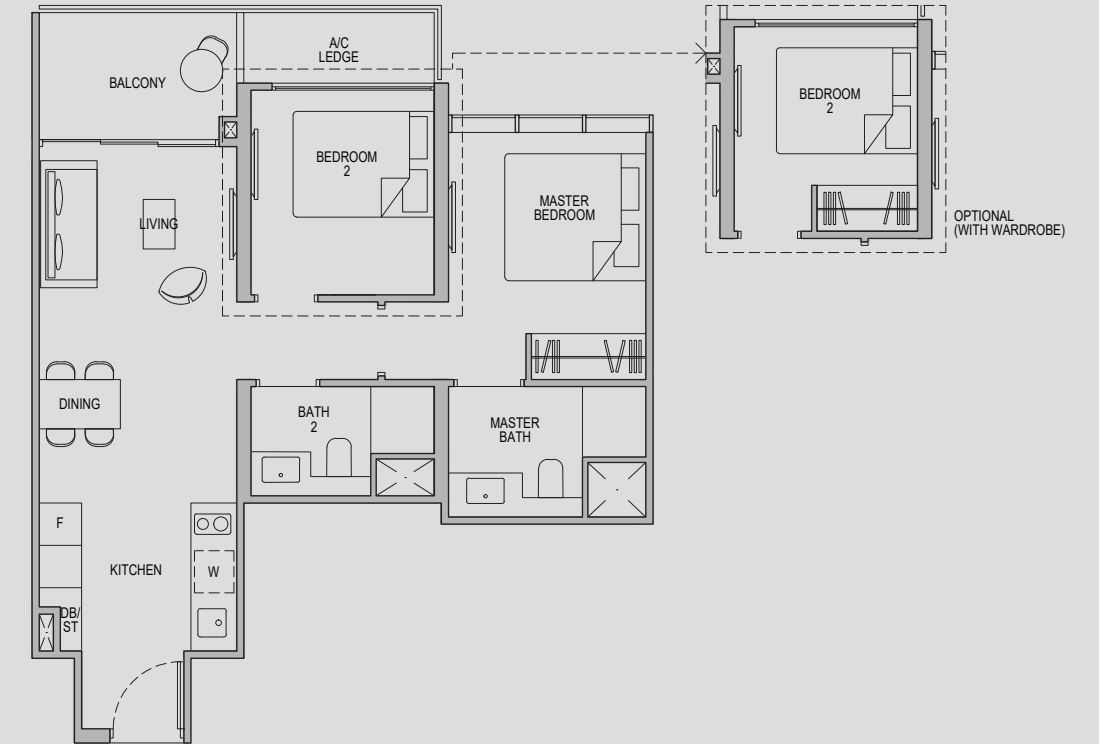
Plans are subject to change/amendments as may be required and/or approved by the Developer and/or the relevant authorities and do not form part of any offer or contract. These are not drawn to scale and are for the purpose of visual presentation only. The balcony shall not be enclosed unless with the approved balcony screen. For an illustration of the approved balcony screen, please refer to APPROVED BALCONY SCREEN DESIGN page of this brochure.

2 - BEDROOM DELUXE

Type 2D1

Area: 64 sqm (include 3 sqm A/C Ledge, 6 sqm Balcony)

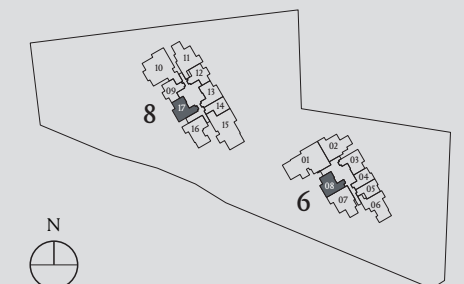
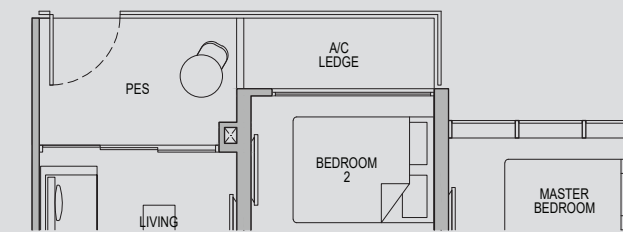
Unit(s): #03-08 to #22-08
#02-17 to #22-17



Type 2D1-G

Area: 64 sqm (include 3 sqm A/C Ledge, 6 sqm PES)

Unit(s): #01-17



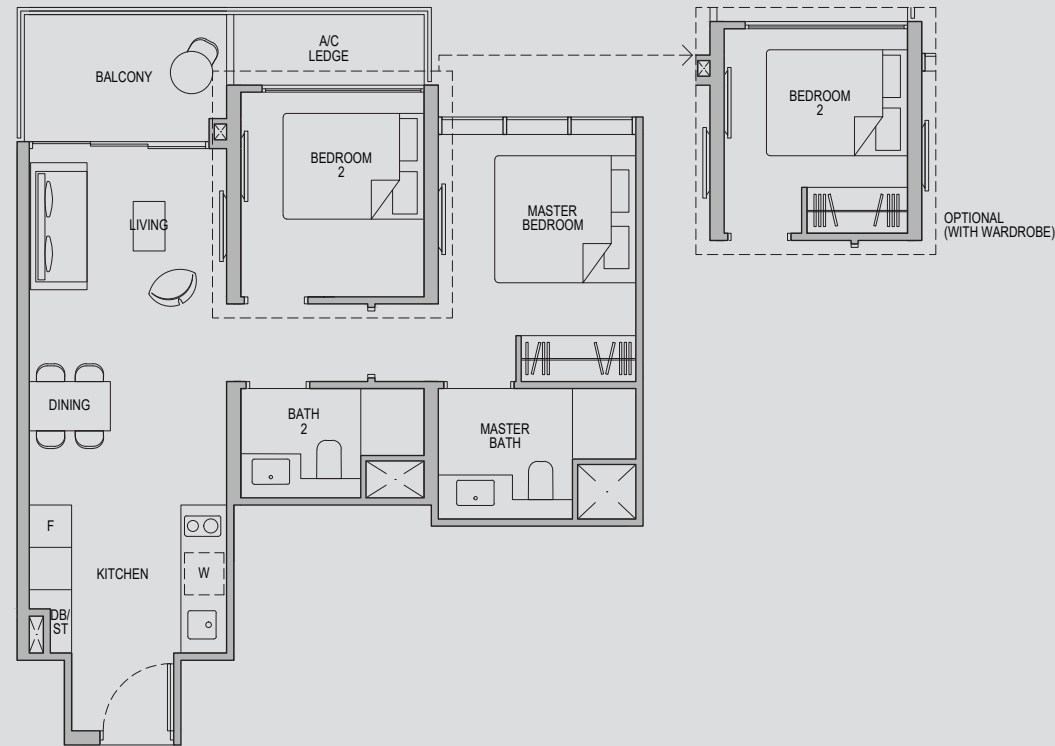
Plans are subject to change/amendments as may be required and/or approved by the Developer and/or the relevant authorities and do not form part of any offer or contract. These are not drawn to scale and are for the purpose of visual presentation only. The balcony shall not be enclosed unless with the approved balcony screen. For an illustration of the approved balcony screen, please refer to APPROVED BALCONY SCREEN DESIGN page of this brochure.

2 - BEDROOM DELUXE

Type 2D1a

Area: 64 sqm (include 3 sqm A/C Ledge, 6 sqm Balcony)

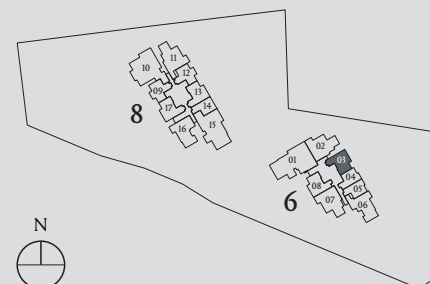
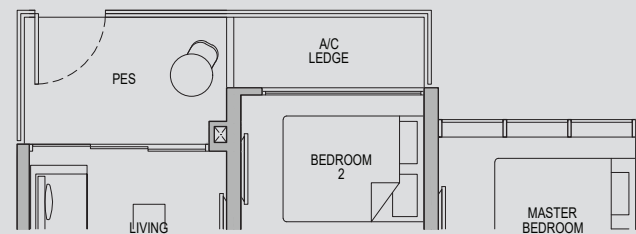
Unit(s): #02-03 to #22-03



Type 2D1a-G

Area: 64 sqm (include 3 sqm A/C Ledge, 6 sqm PES)

Unit(s): #01-03



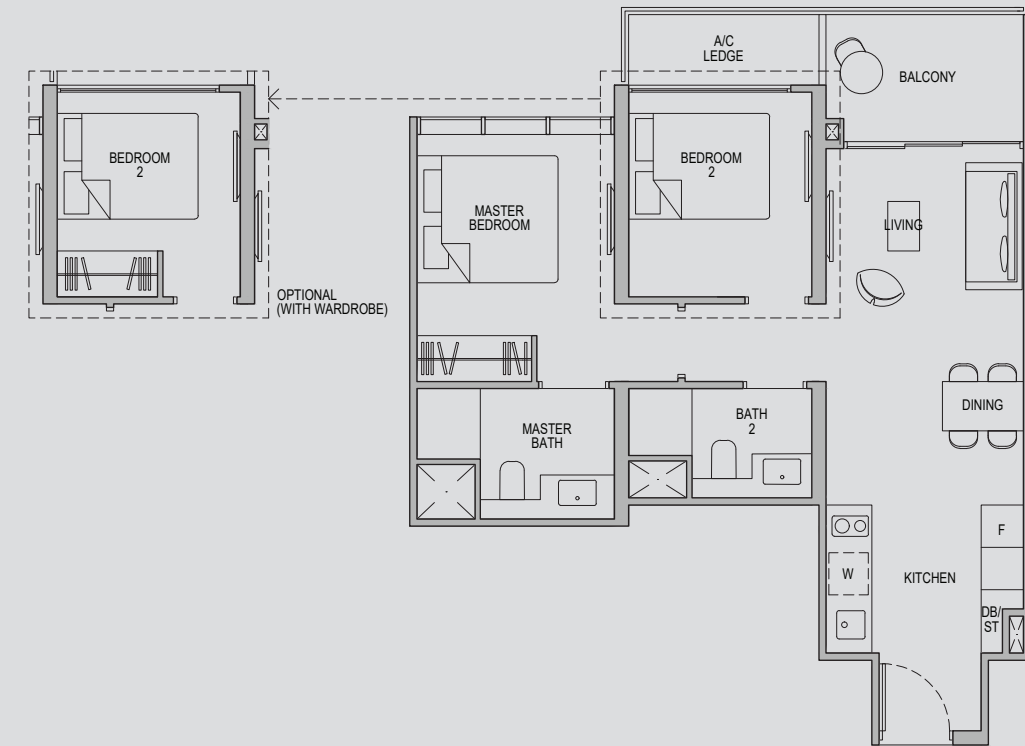
Plans are subject to change/amendments as may be required and/or approved by the Developer and/or the relevant authorities and do not form part of any offer or contract. These are not drawn to scale and are for the purpose of visual presentation only. The balcony shall not be enclosed unless with the approved balcony screen. For an illustration of the approved balcony screen, please refer to APPROVED BALCONY SCREEN DESIGN page of this brochure.

2 - BEDROOM DELUXE

Type 2D1b

Area: 64 sqm (include 3 sqm A/C Ledge, 6 sqm Balcony)

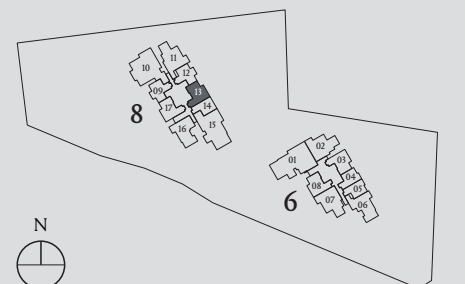
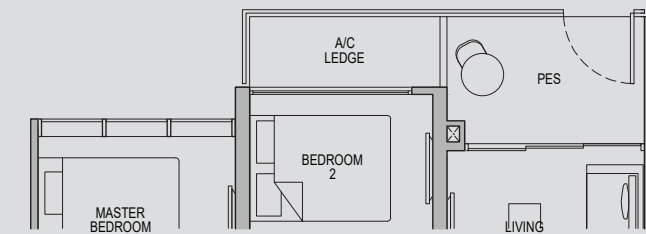
Unit(s): #02-13 to #22-13



Type 2D1b-G

Area: 64 sqm (include 3 sqm A/C Ledge, 6 sqm PES)

Unit(s): #01-13



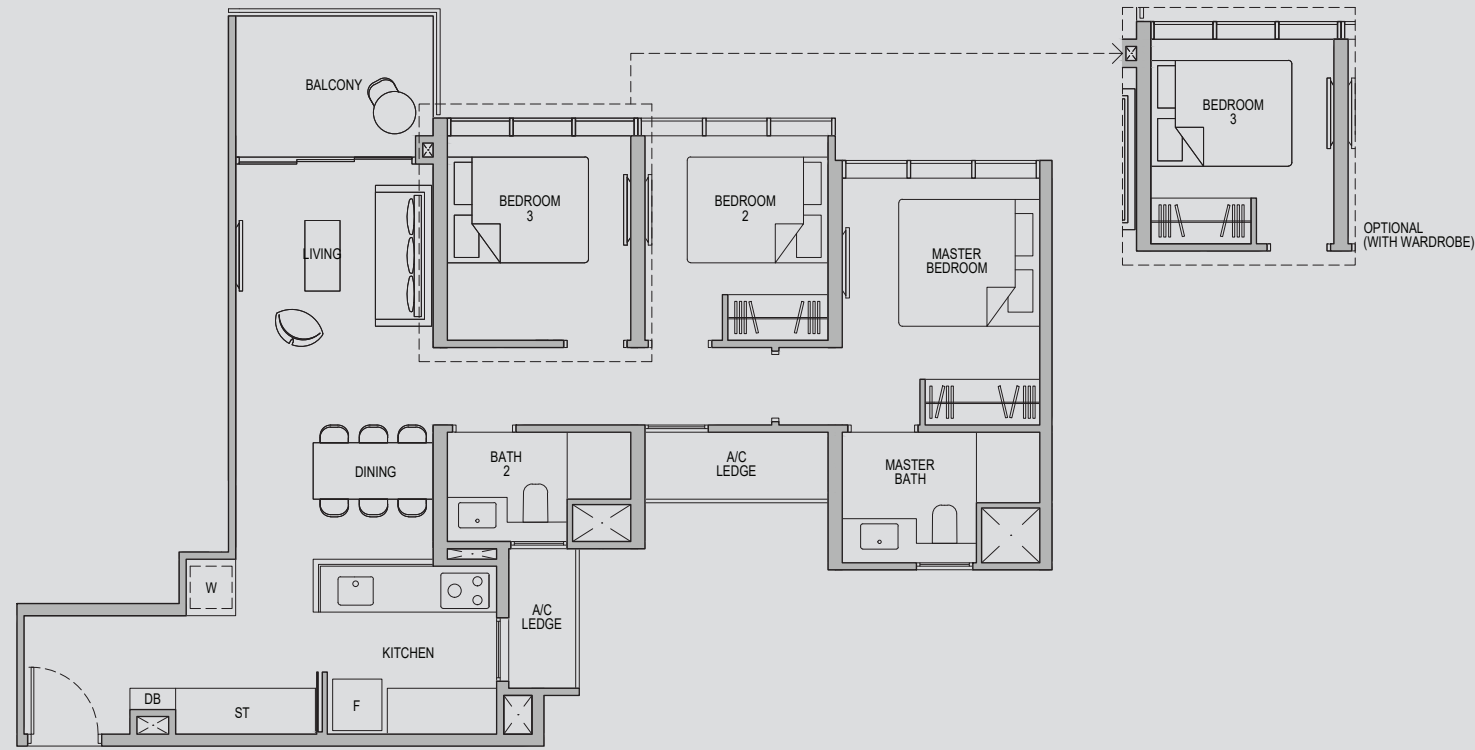
Plans are subject to change/amendments as may be required and/or approved by the Developer and/or the relevant authorities and do not form part of any offer or contract. These are not drawn to scale and are for the purpose of visual presentation only. The balcony shall not be enclosed unless with the approved balcony screen. For an illustration of the approved balcony screen, please refer to APPROVED BALCONY SCREEN DESIGN page of this brochure.

3 - BEDROOM CLASSIC

Type 3C1

Area: 89 sqm (include 5 sqm A/C Ledge, 6 sqm Balcony)

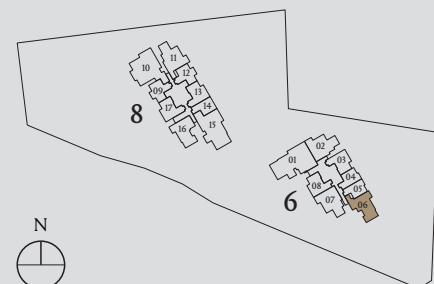
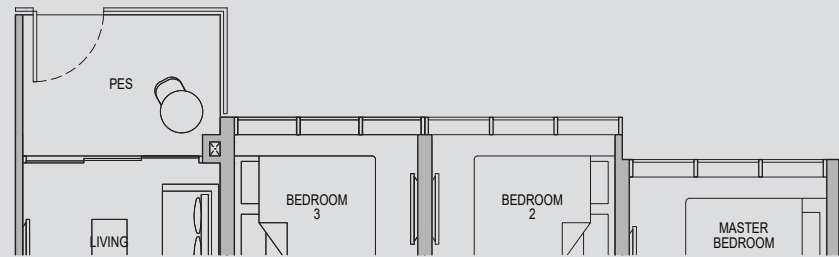
Unit(s): #02-06 to #22-06



Type 3C1-G

Area: 89 sqm (include 5 sqm A/C Ledge, 6 sqm PES)

Unit(s): #01-06



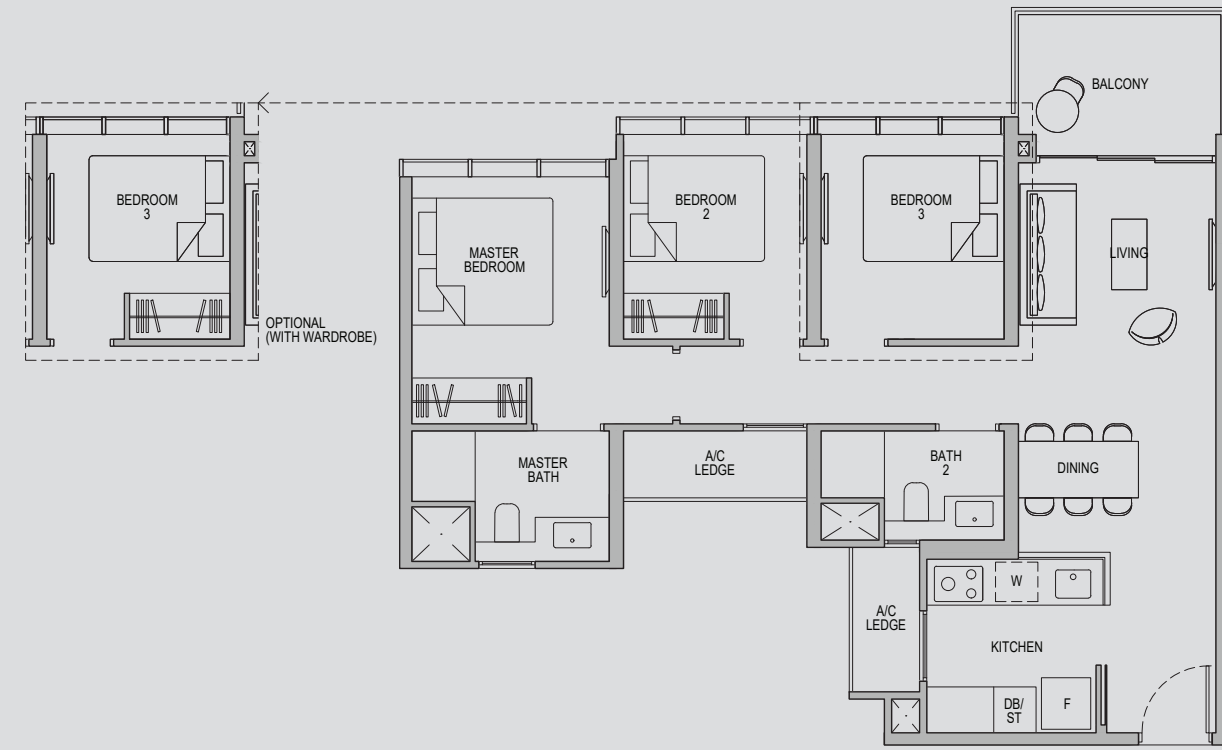
Plans are subject to change/amendments as may be required and/or approved by the Developer and/or the relevant authorities and do not form part of any offer or contract. These are not drawn to scale and are for the purpose of visual presentation only. The balcony shall not be enclosed unless with the approved balcony screen. For an illustration of the approved balcony screen, please refer to APPROVED BALCONY SCREEN DESIGN page of this brochure.

3 - BEDROOM CLASSIC

Type 3C2

Area: 85 sqm (include 5 sqm A/C Ledge, 6 sqm Balcony)

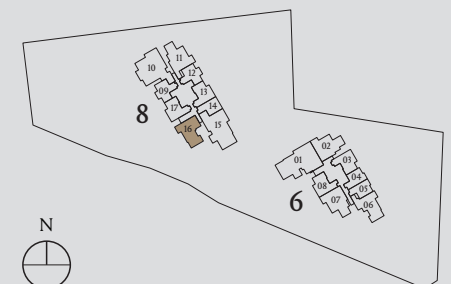
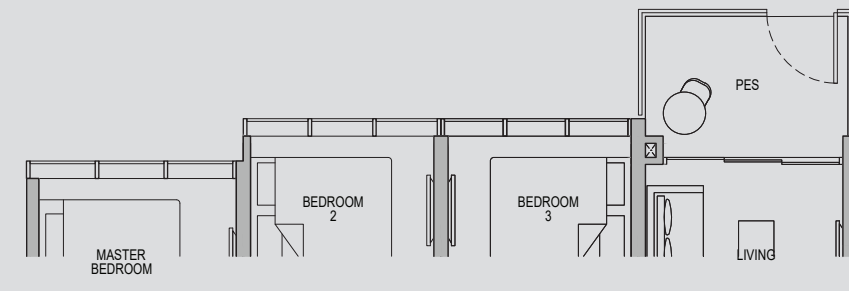
Unit(s): #02-16 to #22-16



Type 3C2-G

Area: 85 sqm (include 5 sqm A/C Ledge, 6 sqm PES)

Unit(s): #01-16



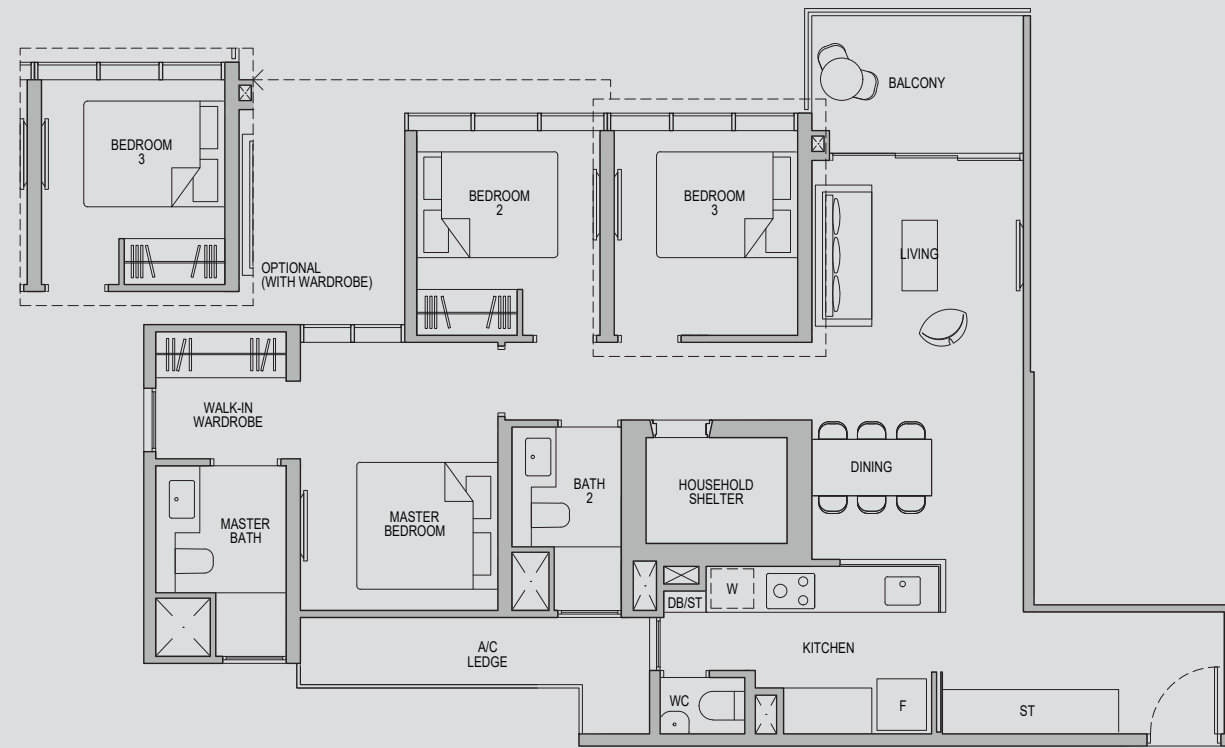
Plans are subject to change/amendments as may be required and/or approved by the Developer and/or the relevant authorities and do not form part of any offer or contract. These are not drawn to scale and are for the purpose of visual presentation only. The balcony shall not be enclosed unless with the approved balcony screen. For an illustration of the approved balcony screen, please refer to APPROVED BALCONY SCREEN DESIGN page of this brochure.

3 - BEDROOM DELUXE

Type 3D1

Area: 102 sqm (include 6 sqm A/C Ledge, 6 sqm Balcony)

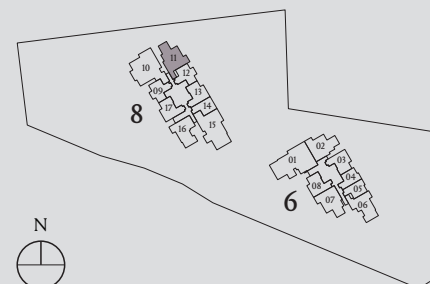
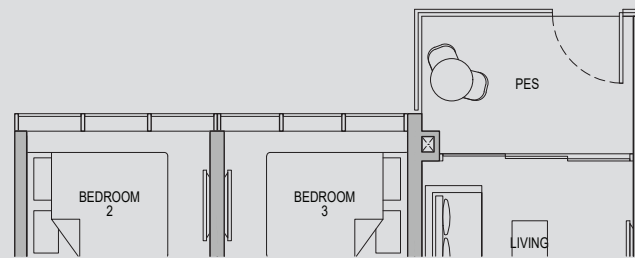
Unit(s): #02-11 to #22-11



Type 3D1-G

Area: 102 sqm (include 6 sqm A/C Ledge, 6 sqm PES)

Unit(s): #01-11



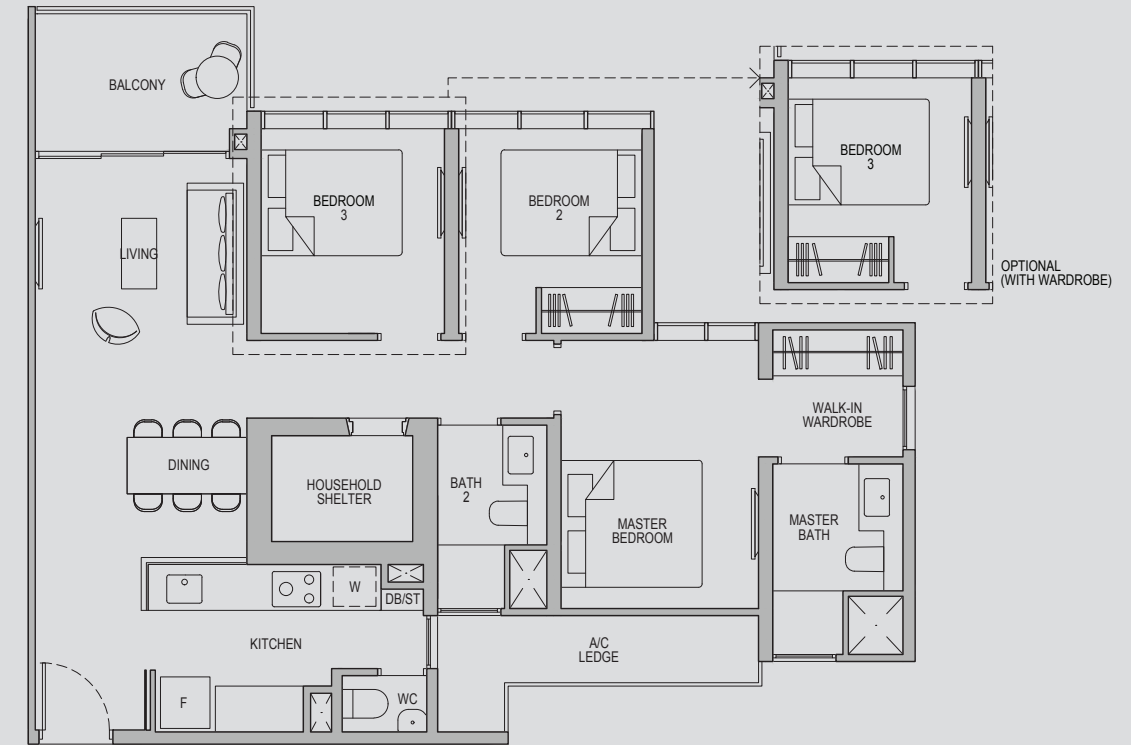
Plans are subject to change/amendments as may be required and/or approved by the Developer and/or the relevant authorities and do not form part of any offer or contract. These are not drawn to scale and are for the purpose of visual presentation only. The balcony shall not be enclosed unless with the approved balcony screen. For an illustration of the approved balcony screen, please refer to APPROVED BALCONY SCREEN DESIGN page of this brochure.

3 - BEDROOM DELUXE

Type 3D2

Area: 98 sqm (include 6 sqm A/C Ledge, 6 sqm Balcony)

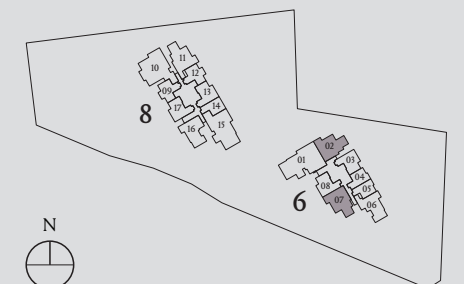
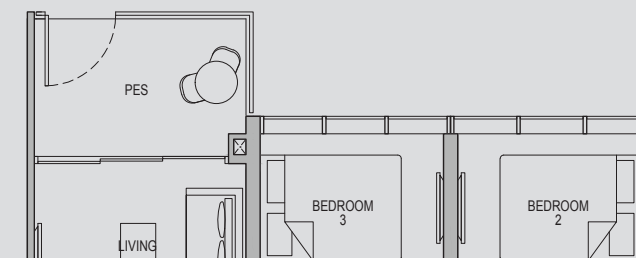
Unit(s): #02-02 to #22-02
#02-07* to #22-07*



Type 3D2-G

Area: 98 sqm (include 6 sqm A/C Ledge, 6 sqm PES)

Unit(s): #01-02
#01-07*



Note: *Mirror Image

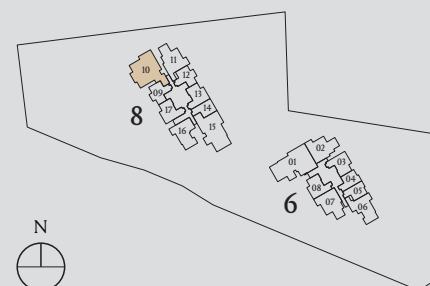
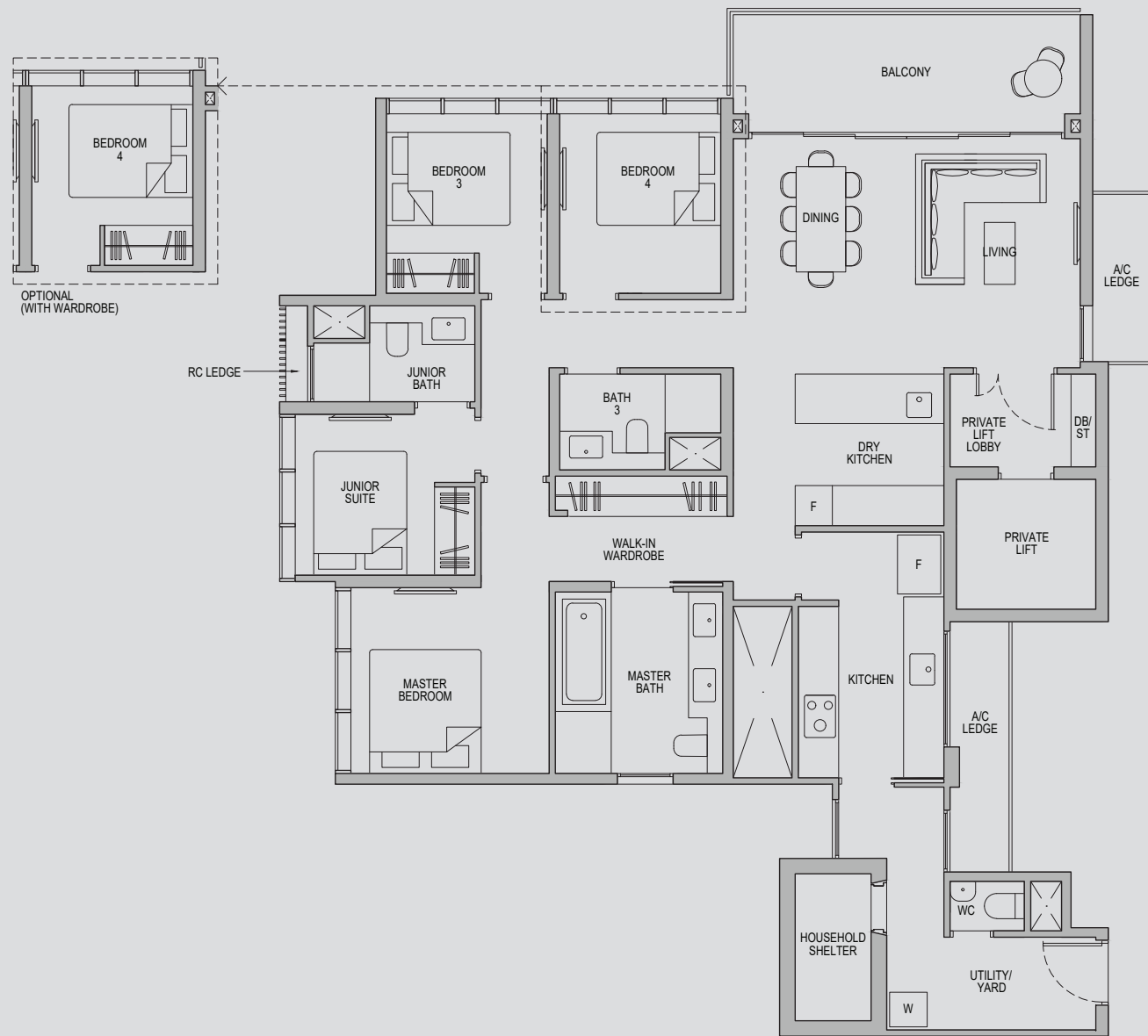
Plans are subject to change/amendments as may be required and/or approved by the Developer and/or the relevant authorities and do not form part of any offer or contract. These are not drawn to scale and are for the purpose of visual presentation only. The balcony shall not be enclosed unless with the approved balcony screen. For an illustration of the approved balcony screen, please refer to APPROVED BALCONY SCREEN DESIGN page of this brochure.

4 - BEDROOM DELUXE

Type 4D1

Area: 149 sqm (include 7 sqm A/C Ledge, 11 sqm Balcony)

Unit(s): #02-10 to #22-10



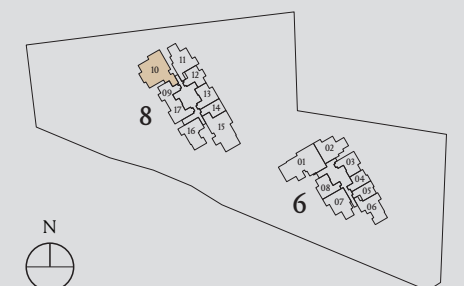
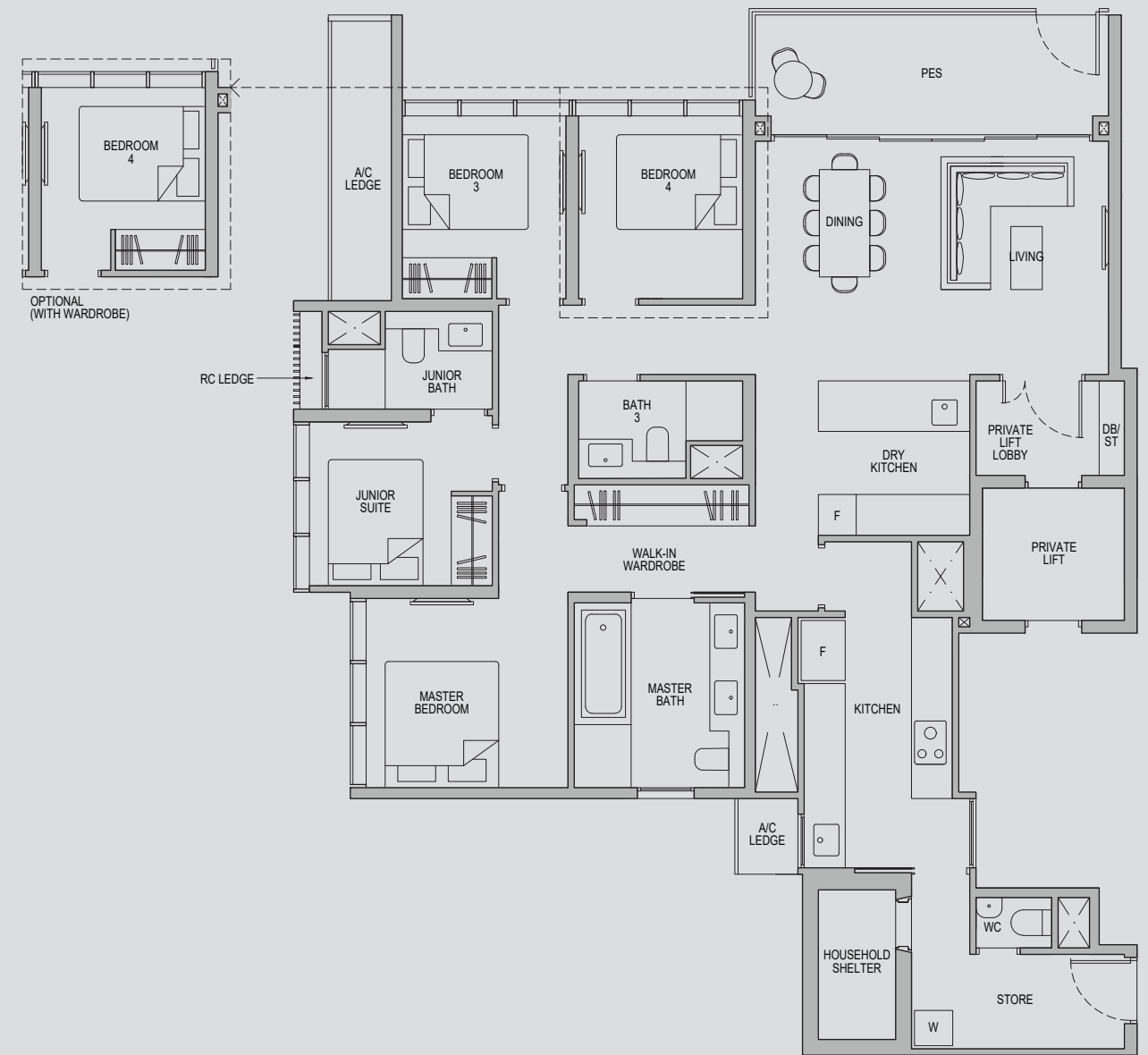
Plans are subject to change/amendments as may be required and/or approved by the Developer and/or the relevant authorities and do not form part of any offer or contract. These are not drawn to scale and are for the purpose of visual presentation only. The balcony shall not be enclosed unless with the approved balcony screen. For an illustration of the approved balcony screen, please refer to APPROVED BALCONY SCREEN DESIGN page of this brochure.

4 - BEDROOM DELUXE

Type 4D1-G

Area: 149 sqm (include 7 sqm A/C Ledge, 11 sqm PES)

Unit(s): #01-10



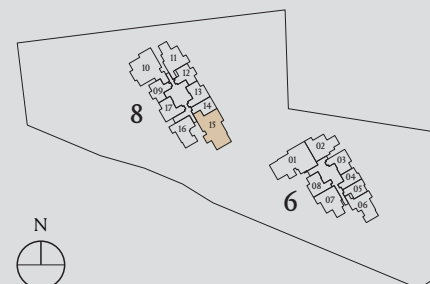
Plans are subject to change/amendments as may be required and/or approved by the Developer and/or the relevant authorities and do not form part of any offer or contract. These are not drawn to scale and are for the purpose of visual presentation only. The balcony shall not be enclosed unless with the approved balcony screen. For an illustration of the approved balcony screen, please refer to APPROVED BALCONY SCREEN DESIGN page of this brochure.

4 - BEDROOM DELUXE

Type 4D2

Area: 142 sqm (include 7 sqm A/C Ledge, 12 sqm Balcony)

Unit(s): #02-15 to #04-15



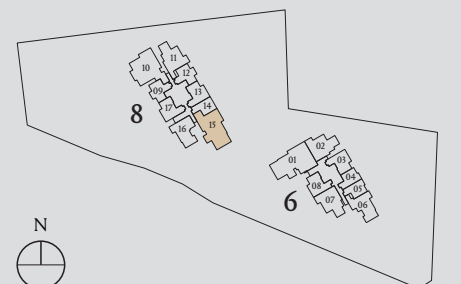
Plans are subject to change/amendments as may be required and/or approved by the Developer and/or the relevant authorities and do not form part of any offer or contract. These are not drawn to scale and are for the purpose of visual presentation only. The balcony shall not be enclosed unless with the approved balcony screen. For an illustration of the approved balcony screen, please refer to APPROVED BALCONY SCREEN DESIGN page of this brochure.

4 - BEDROOM DELUXE

Type 4D2-G

Area: 141 sqm (include 6 sqm A/C Ledge, 12 sqm PES)

Unit(s): #01-15



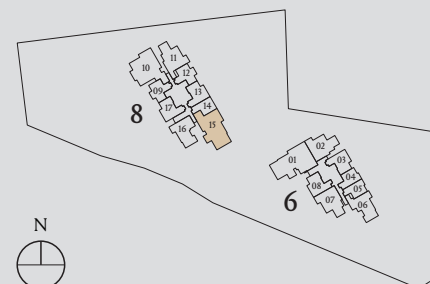
Plans are subject to change/amendments as may be required and/or approved by the Developer and/or the relevant authorities and do not form part of any offer or contract. These are not drawn to scale and are for the purpose of visual presentation only. The balcony shall not be enclosed unless with the approved balcony screen. For an illustration of the approved balcony screen, please refer to APPROVED BALCONY SCREEN DESIGN page of this brochure.

4 - BEDROOM DELUXE

Type 4D2a

Area: 142 sqm (include 7 sqm A/C Ledge, 12 sqm Balcony)

Unit(s): #05-15 to #22-15



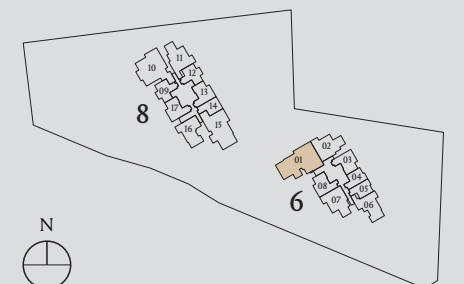
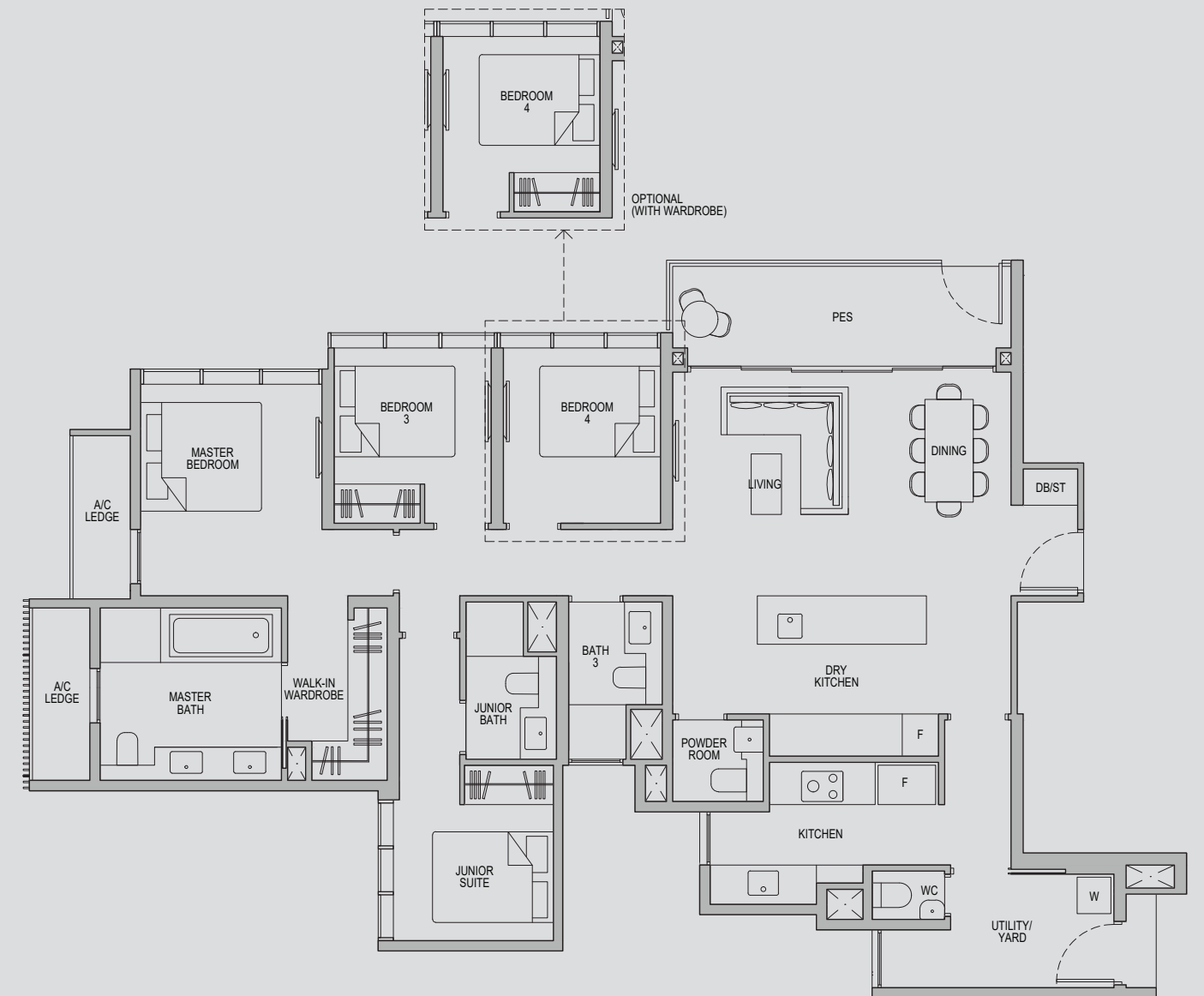
Plans are subject to change/amendments as may be required and/or approved by the Developer and/or the relevant authorities and do not form part of any offer or contract. These are not drawn to scale and are for the purpose of visual presentation only. The balcony shall not be enclosed unless with the approved balcony screen. For an illustration of the approved balcony screen, please refer to APPROVED BALCONY SCREEN DESIGN page of this brochure.

4 - BEDROOM DELUXE

Type 4D3-G

Area: 148 sqm (include 6 sqm A/C Ledge, 10 sqm PES)

Unit(s): #01-01



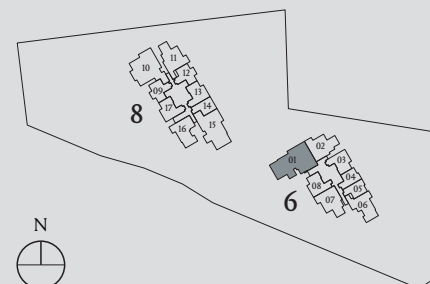
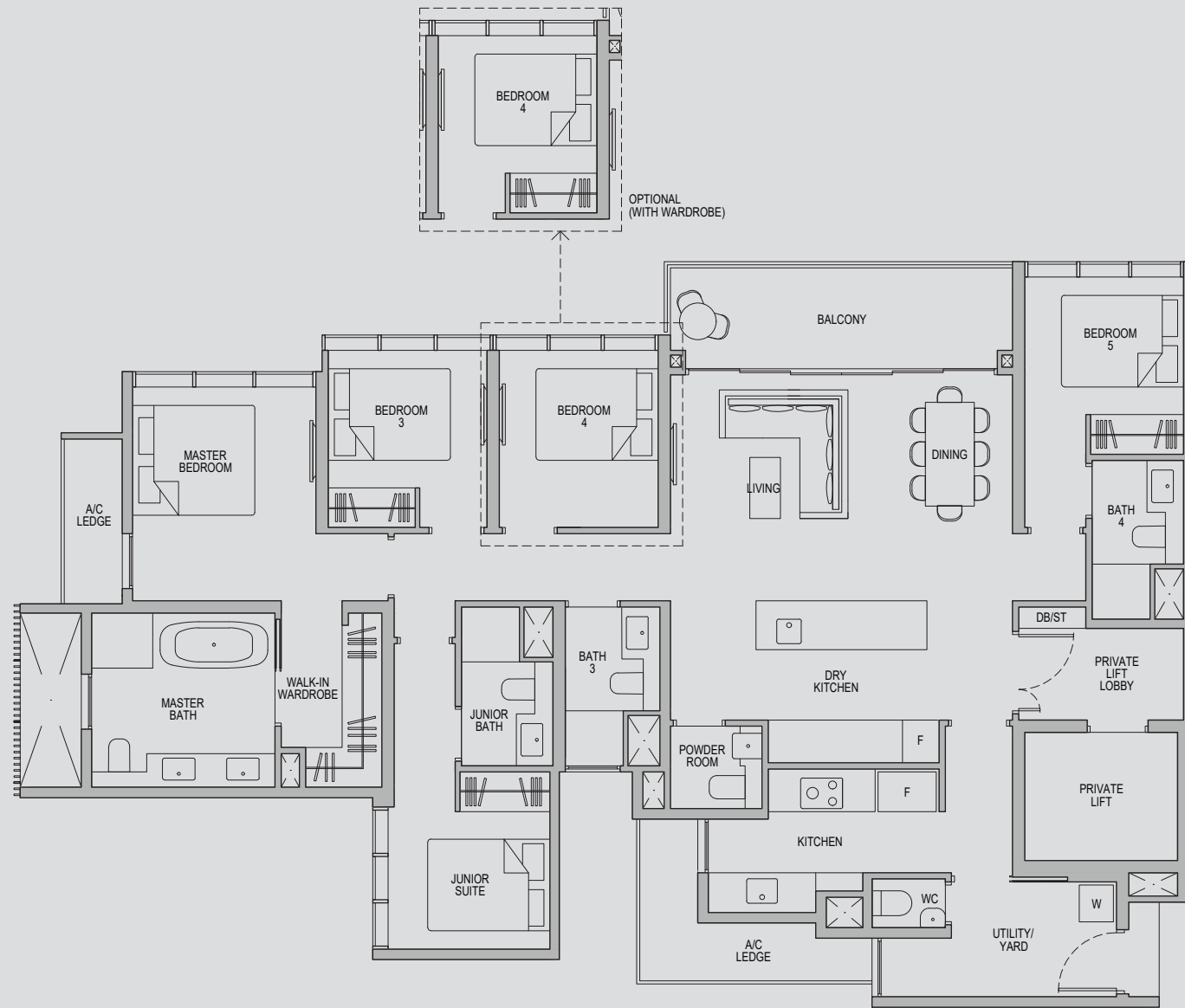
Plans are subject to change/amendments as may be required and/or approved by the Developer and/or the relevant authorities and do not form part of any offer or contract. These are not drawn to scale and are for the purpose of visual presentation only. The balcony shall not be enclosed unless with the approved balcony screen. For an illustration of the approved balcony screen, please refer to APPROVED BALCONY SCREEN DESIGN page of this brochure.

5 - BEDROOM LUXURY

Type 5L1

Area: 169 sqm (include 9 sqm A/C Ledge, 10 sqm Balcony)

Unit(s): #02-01 to #04-01



Note: *Mirror Image

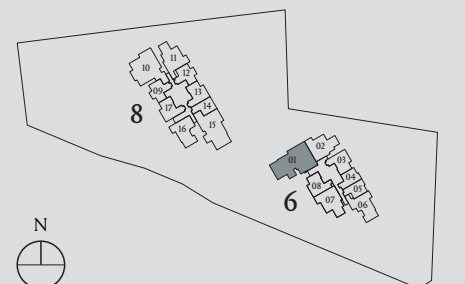
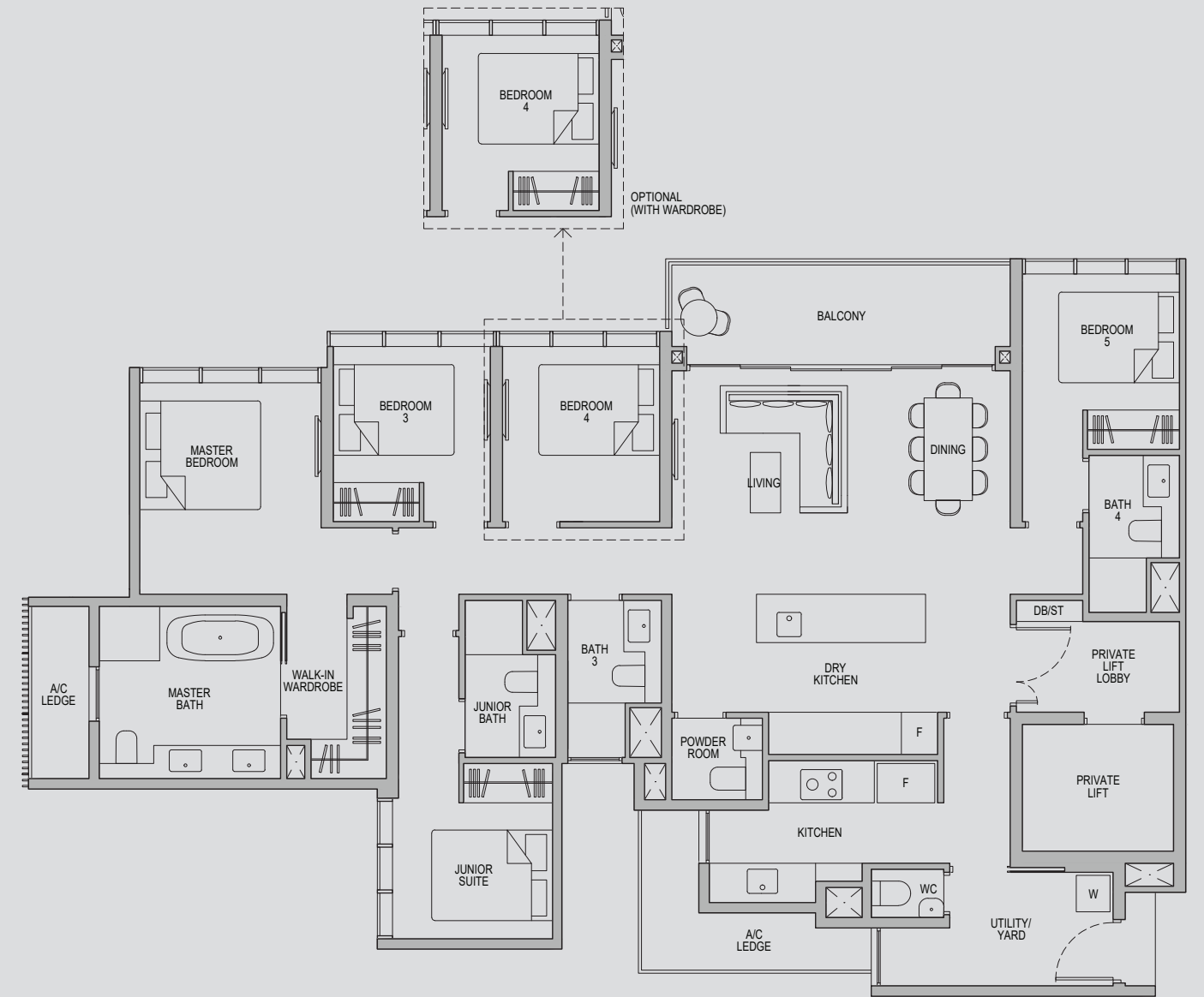
Plans are subject to change/amendments as may be required and/or approved by the Developer and/or the relevant authorities and do not form part of any offer or contract. These are not drawn to scale and are for the purpose of visual presentation only. The balcony shall not be enclosed unless with the approved balcony screen. For an illustration of the approved balcony screen, please refer to APPROVED BALCONY SCREEN DESIGN page of this brochure.

5 - BEDROOM LUXURY

Type 5L1a

Area: 169 sqm (include 9 sqm A/C Ledge, 10 sqm Balcony)

Unit(s): #05-01 to #22-01



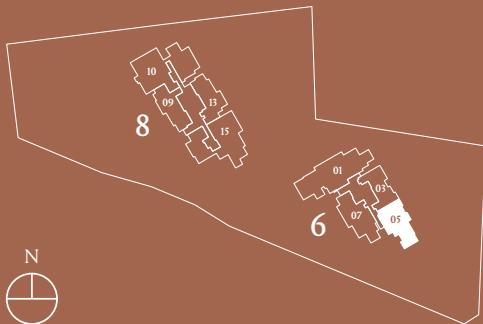
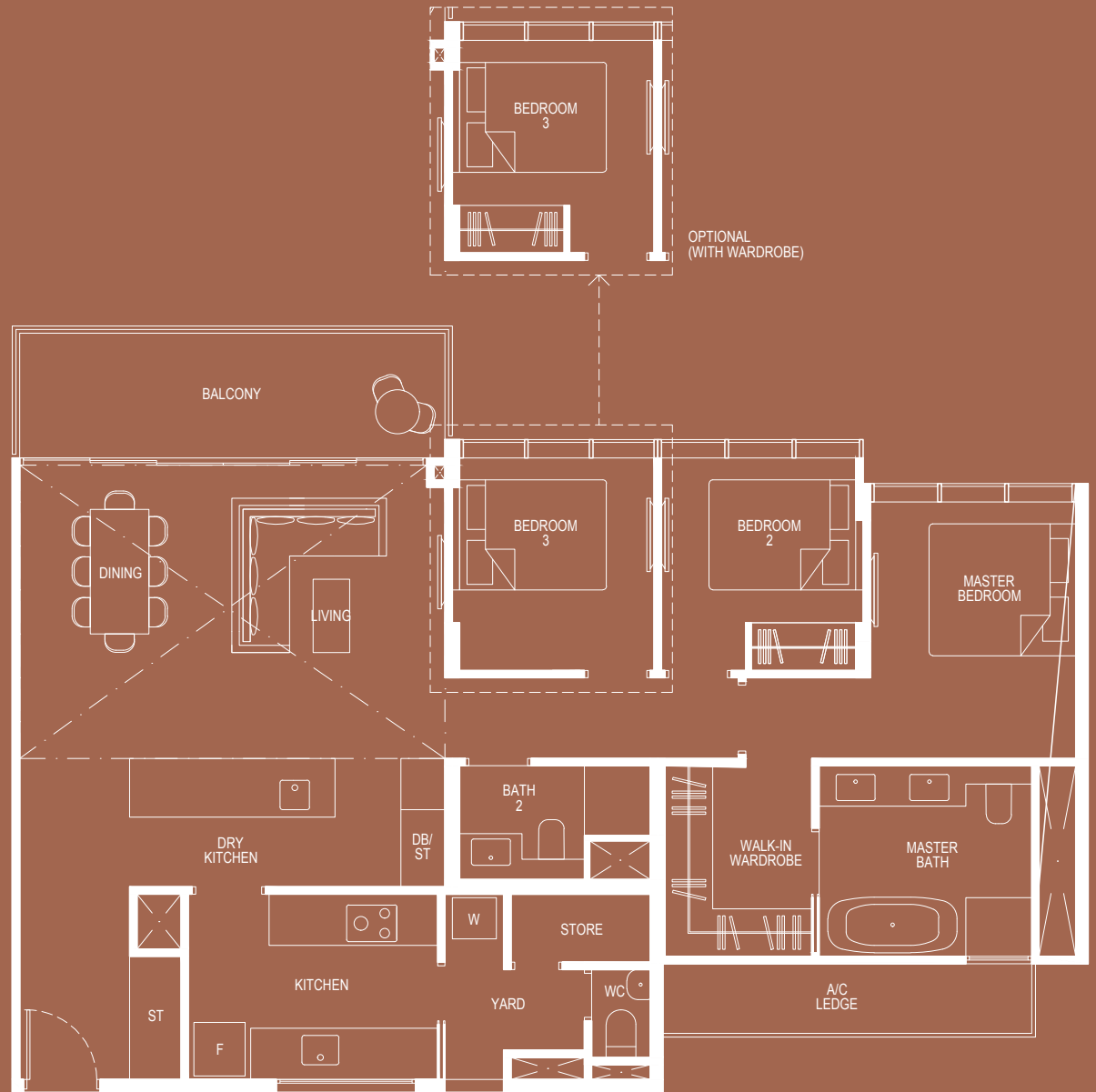
Plans are subject to change/amendments as may be required and/or approved by the Developer and/or the relevant authorities and do not form part of any offer or contract. These are not drawn to scale and are for the purpose of visual presentation only. The balcony shall not be enclosed unless with the approved balcony screen. For an illustration of the approved balcony screen, please refer to APPROVED BALCONY SCREEN DESIGN page of this brochure.

3 - BEDROOM DELUXE PENTHOUSE

Type 3D3-PH

152 sqm (include 5 sqm A/C Ledge, 11 sqm Balcony, 25 sqm Void)

Unit(s): #23-05



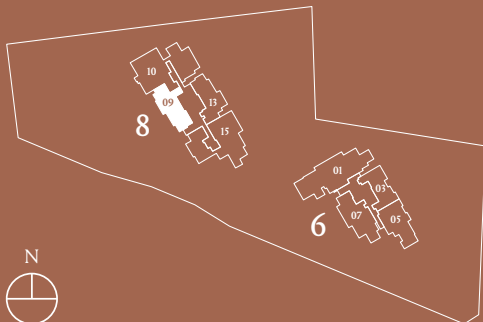
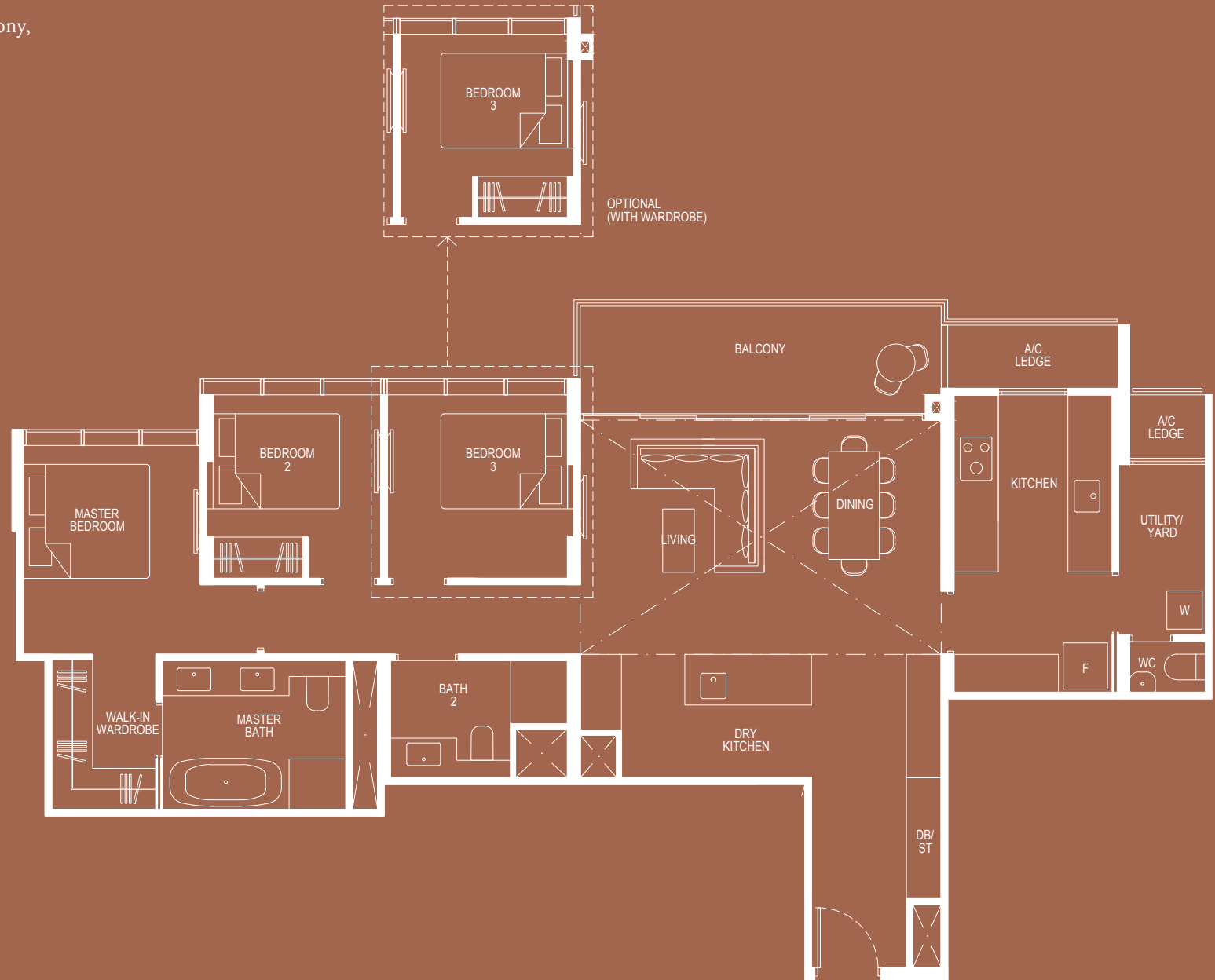
Plans are subject to change/amendments as may be required and/or approved by the Developer and/or the relevant authorities and do not form part of any offer or contract. These are not drawn to scale and are for the purpose of visual presentation only. The balcony shall not be enclosed unless with the approved balcony screen. For an illustration of the approved balcony screen, please refer to APPROVED BALCONY SCREEN DESIGN page of this brochure.

3 - BEDROOM DELUXE PENTHOUSE

Type 3D4-PH

148 sqm (include 5 sqm A/C Ledge, 10 sqm Balcony,
22 sqm Void)

Unit(s): #23-09



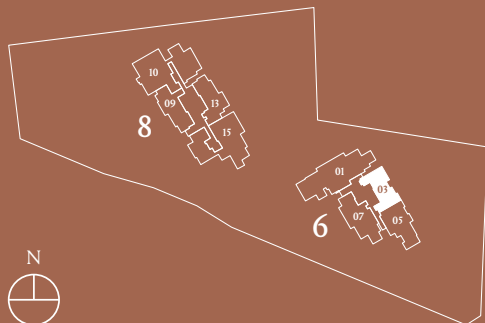
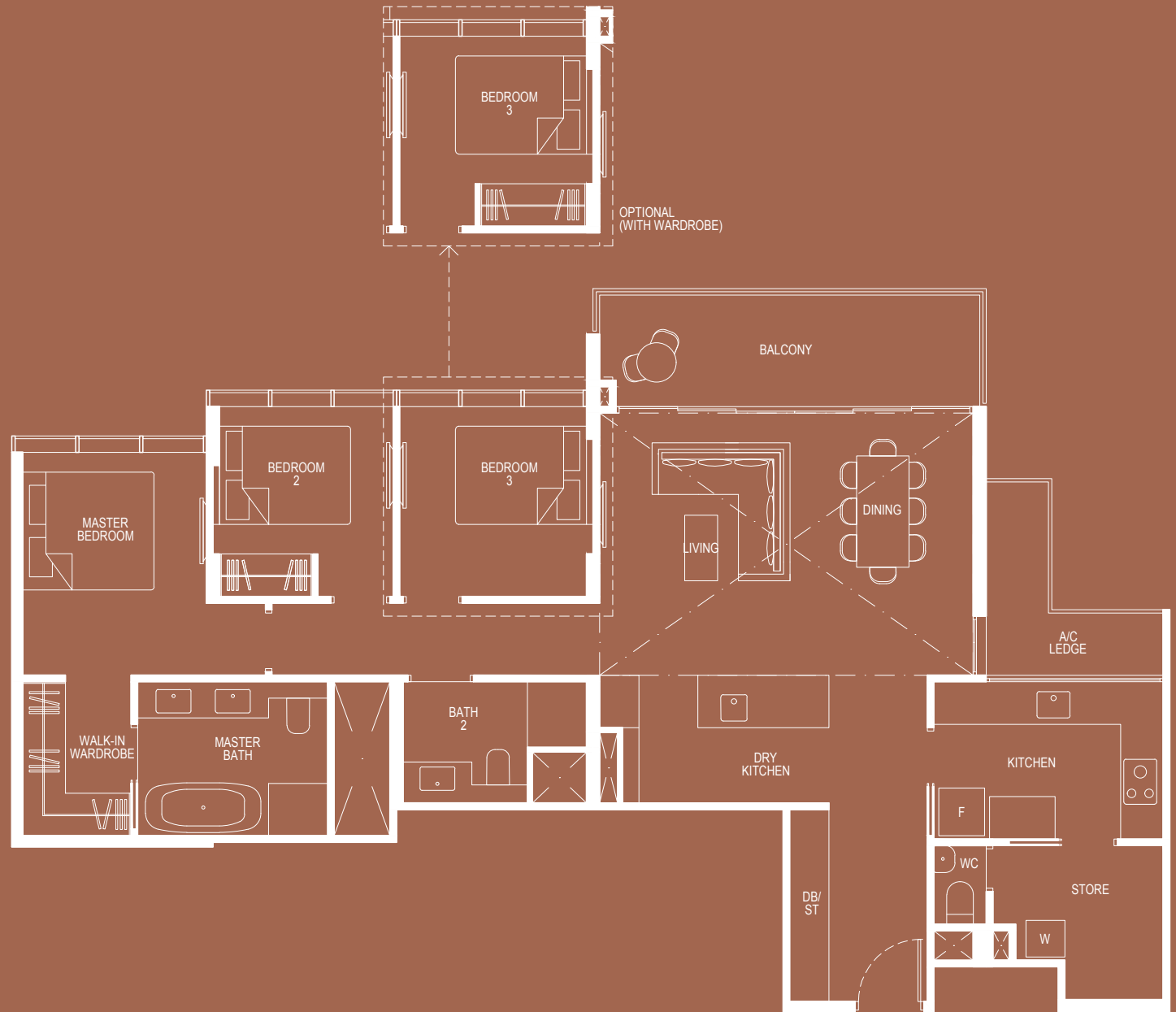
Plans are subject to change/amendments as may be required and/or approved by the Developer and/or the relevant authorities and do not form part of any offer or contract. These are not drawn to scale and are for the purpose of visual presentation only. The balcony shall not be enclosed unless with the approved balcony screen. For an illustration of the approved balcony screen, please refer to APPROVED BALCONY SCREEN DESIGN page of this brochure.

3 - BEDROOM DELUXE PENTHOUSE

Type 3D5-PH

150 sqm (include 5 sqm A/C Ledge, 11 sqm Balcony, 24 sqm Void)

Unit(s): #23-03



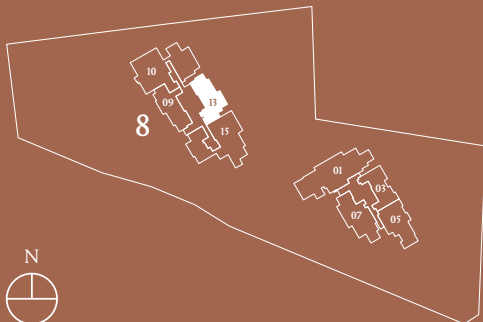
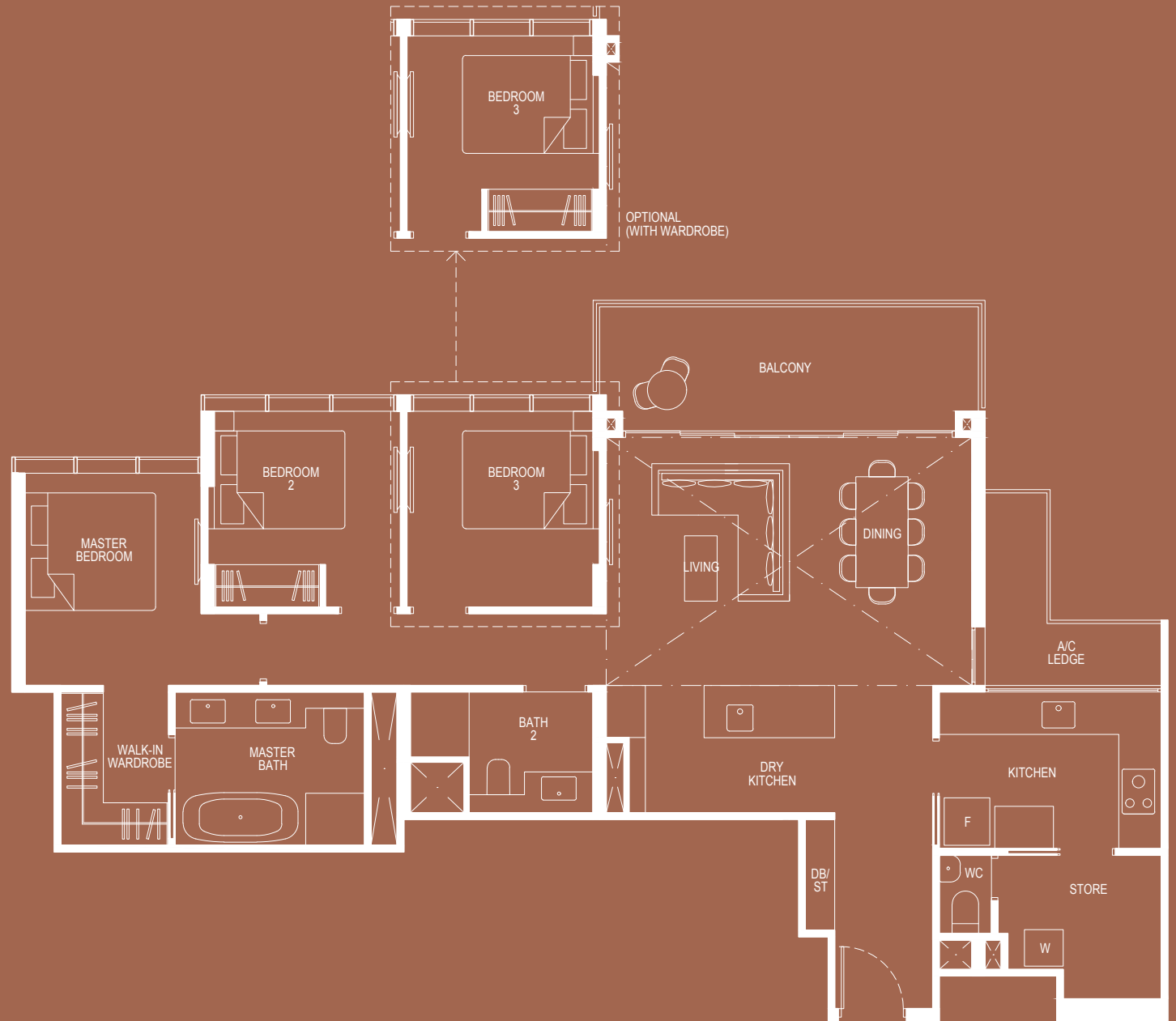
Plans are subject to change/amendments as may be required and/or approved by the Developer and/or the relevant authorities and do not form part of any offer or contract. These are not drawn to scale and are for the purpose of visual presentation only. The balcony shall not be enclosed unless with the approved balcony screen. For an illustration of the approved balcony screen, please refer to APPROVED BALCONY SCREEN DESIGN page of this brochure.

3 - BEDROOM DELUXE PENTHOUSE

Type 3D6-PH

148 sqm (include 5 sqm A/C Ledge, 12 sqm Balcony, 23 sqm Void)

Unit(s): #23-13



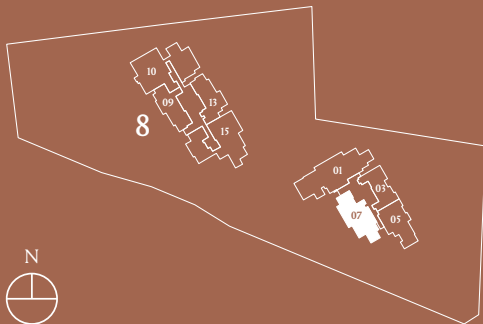
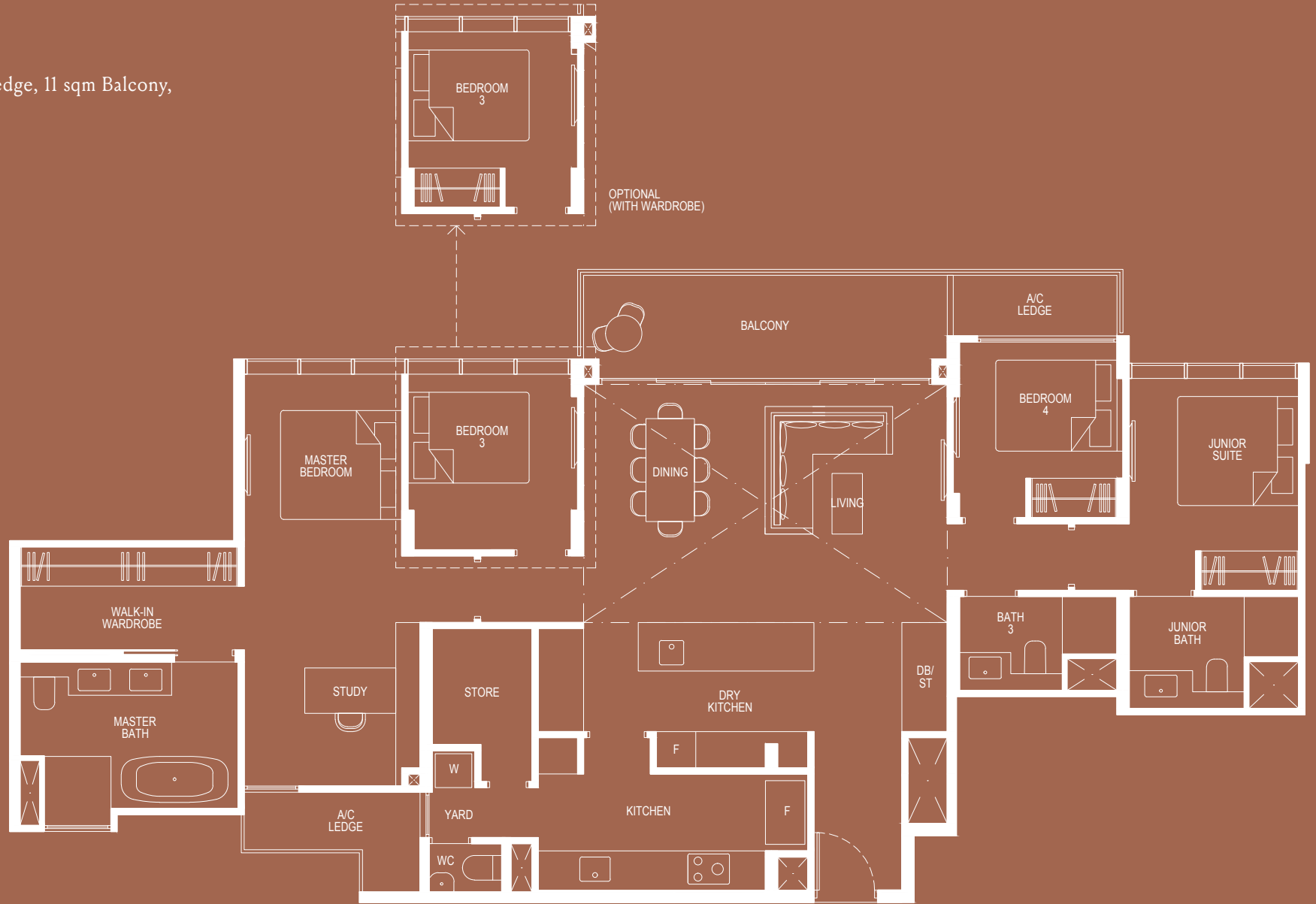
Plans are subject to change/amendments as may be required and/or approved by the Developer and/or the relevant authorities and do not form part of any offer or contract. These are not drawn to scale and are for the purpose of visual presentation only. The balcony shall not be enclosed unless with the approved balcony screen. For an illustration of the approved balcony screen, please refer to APPROVED BALCONY SCREEN DESIGN page of this brochure.

4 - BEDROOM DELUXE PENTHOUSE

Type 4D4-PH

185 sqm (include 7 sqm A/C Ledge, 11 sqm Balcony, 25 sqm Void)

Unit(s): #23-07



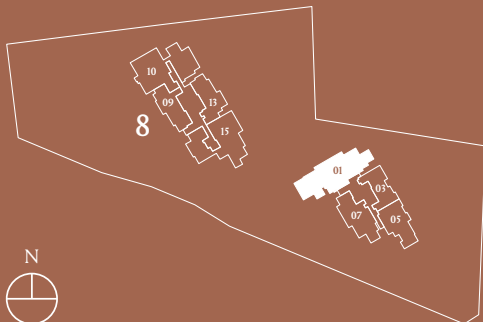
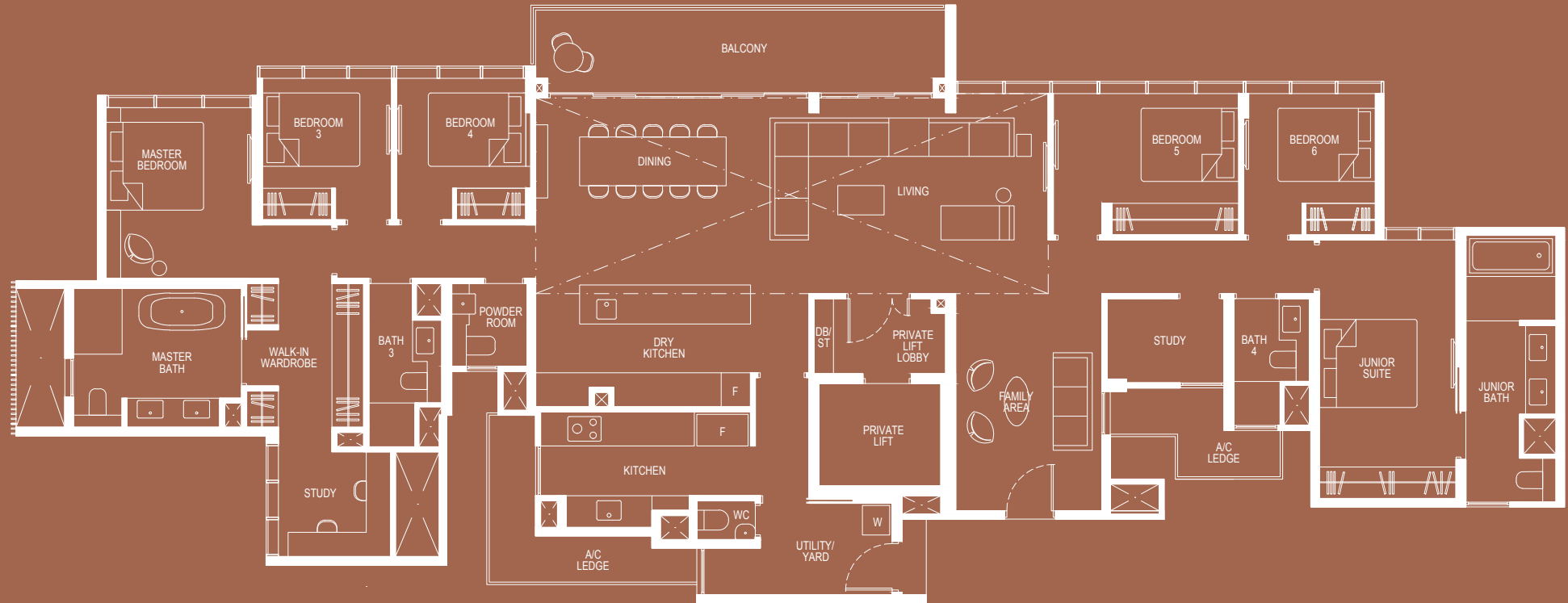
Plans are subject to change/amendments as may be required and/or approved by the Developer and/or the relevant authorities and do not form part of any offer or contract. These are not drawn to scale and are for the purpose of visual presentation only. The balcony shall not be enclosed unless with the approved balcony screen. For an illustration of the approved balcony screen, please refer to APPROVED BALCONY SCREEN DESIGN page of this brochure.

PREMIER PENTHOUSE

PH1

302 sqm (include 12 sqm A/C Ledge, 15 sqm Balcony, 44 sqm Void)

Unit(s): #23-01



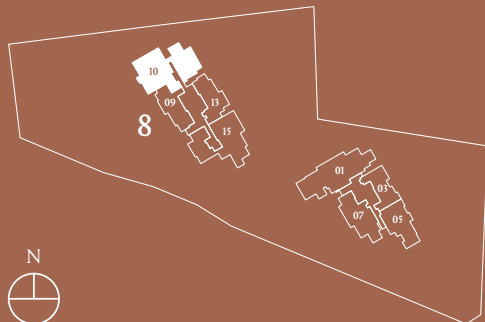
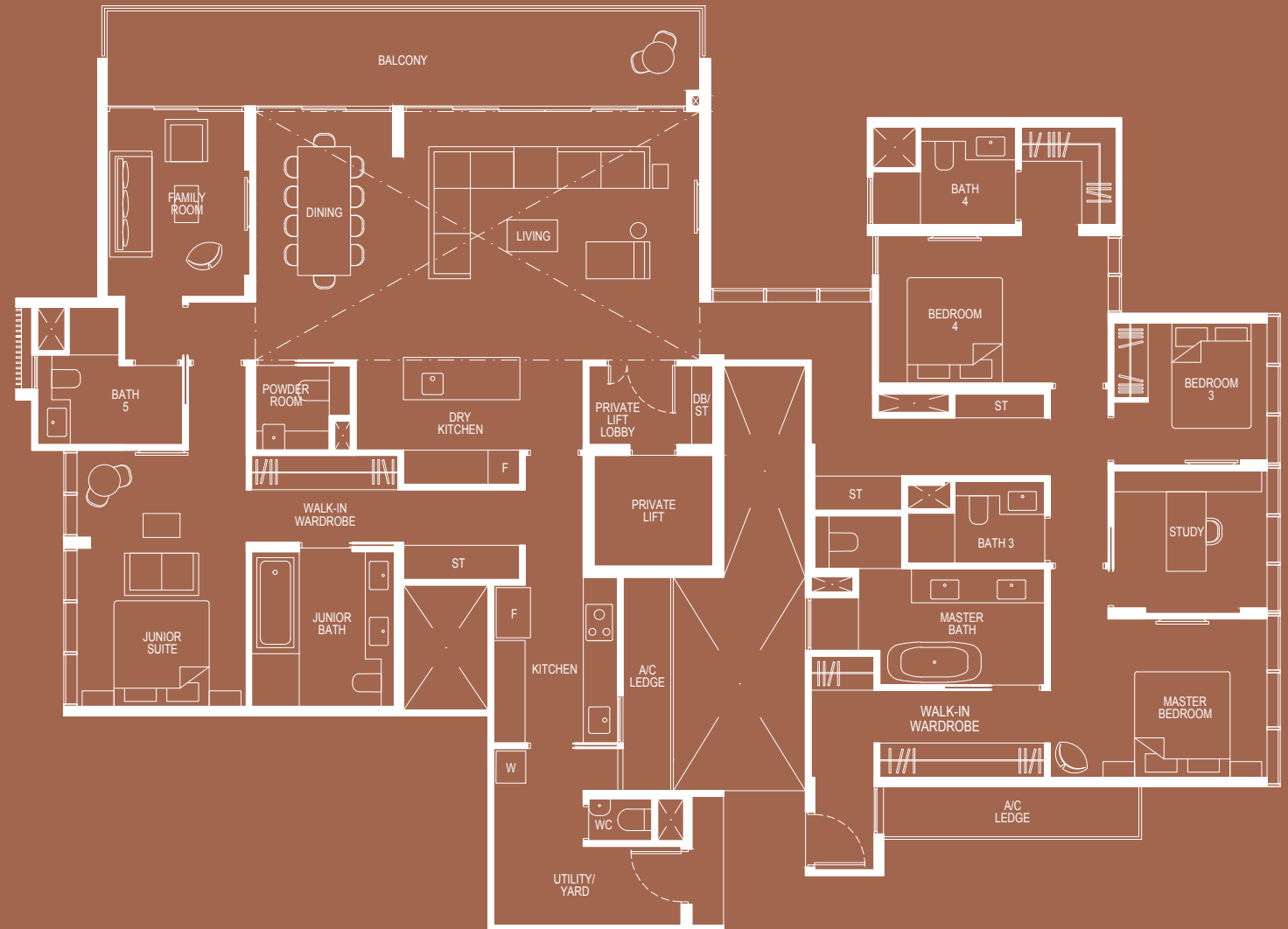
Plans are subject to change/amendments as may be required and/or approved by the Developer and/or the relevant authorities and do not form part of any offer or contract. These are not drawn to scale and are for the purpose of visual presentation only. The balcony shall not be enclosed unless with the approved balcony screen. For an illustration of the approved balcony screen, please refer to APPROVED BALCONY SCREEN DESIGN page of this brochure.

PREMIER PENTHOUSE

PH2

307 sqm (include 10 sqm A/C Ledge, 22 sqm Balcony,
41 sqm Void)

Unit(s): #23-10



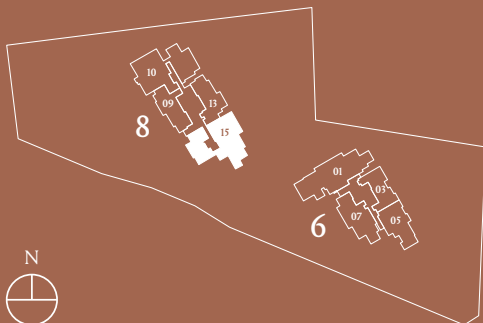
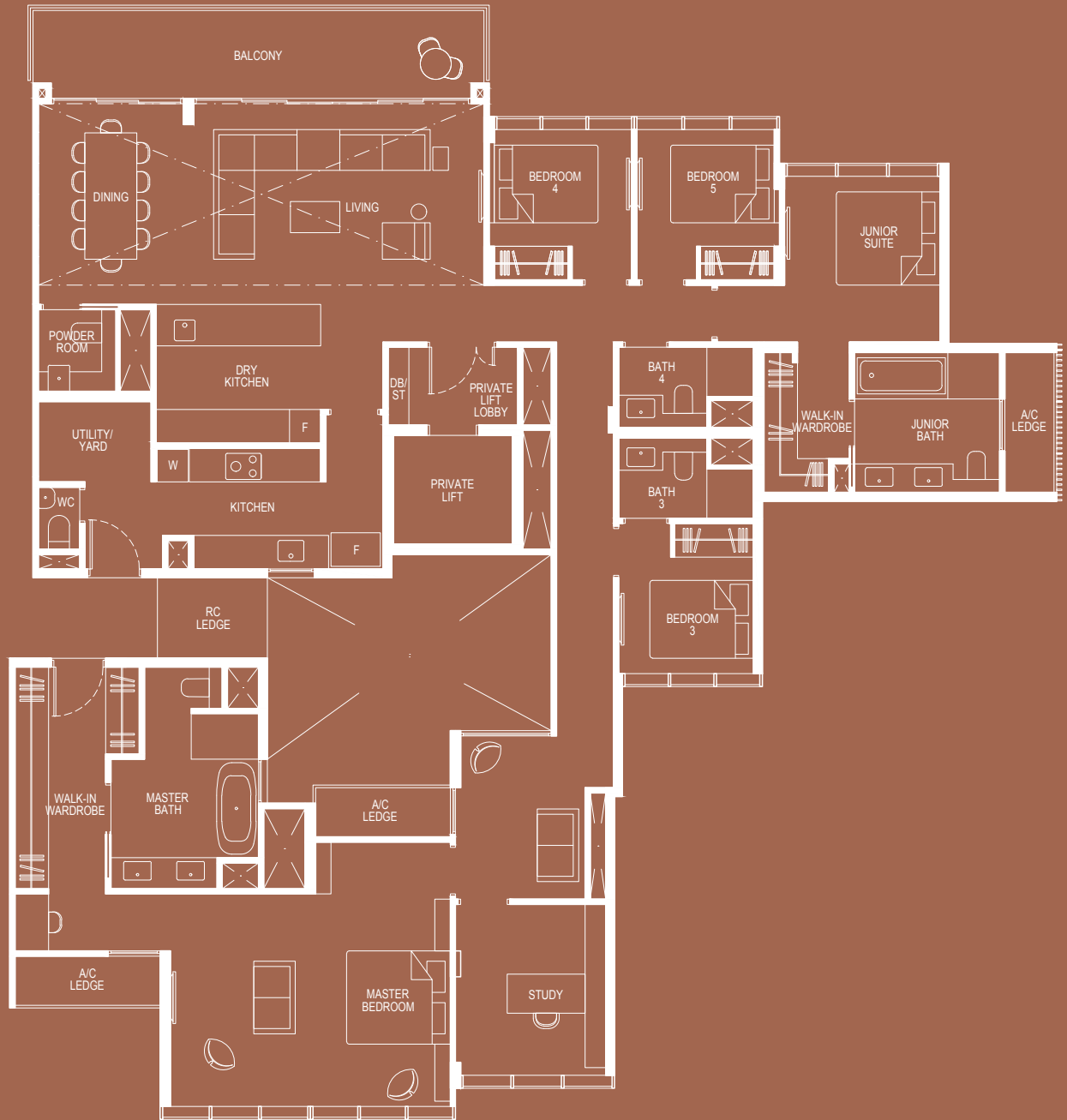
Plans are subject to change/amendments as may be required and/or approved by the Developer and/or the relevant authorities and do not form part of any offer or contract. These are not drawn to scale and are for the purpose of visual presentation only. The balcony shall not be enclosed unless with the approved balcony screen. For an illustration of the approved balcony screen, please refer to APPROVED BALCONY SCREEN DESIGN page of this brochure.

PREMIER PENTHOUSE

PH3

275 sqm (include 9 sqm A/C Ledge, 16 sqm Balcony, 30 sqm Void)

Unit(s): #23-15



Plans are subject to change/amendments as may be required and/or approved by the Developer and/or the relevant authorities and do not form part of any offer or contract. These are not drawn to scale and are for the purpose of visual presentation only. The balcony shall not be enclosed unless with the approved balcony screen. For an illustration of the approved balcony screen, please refer to APPROVED BALCONY SCREEN DESIGN page of this brochure.